

EURO
אורכא

 MEDICAL
COMPRESSION
PRODUCTS



**MEDICAL
COMPRESSION
PRODUCTS**



EUROPACK EUROPACK

CATCH THE TIME

We are **EUROPACK**, we set out to support you, add comfort to your life, grow and develop together, fully adhere to ethical principles and rules, and create value for the environment, all living things and humanity.

Love

Respect

Justice

Hope

all we need is





in the world



Kindness



Inclusion



Equality



Peace



I
N
D
E
X

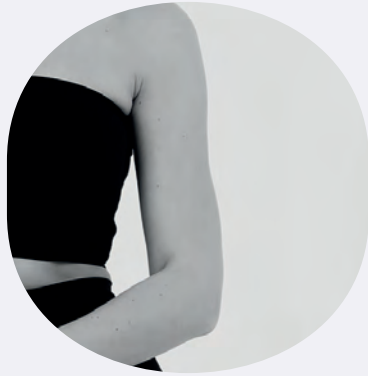


• WHO IS EUROPACK? (Pg. 7) • WHY OUR PRODUCTS? (Pg. 8 - 9) • WE CARE (Pg. 10 - 11) • MEDICAL COMPRESSION STOCKINGS (Pg. 14 - 15) • ANTI EMBOLISM STOCKINGS (Pg. 16 - 17)
• LYMPHEDEMA ARM SLEEVES (Pg. 18 - 19) • HOW TO MEASURE? (Pg. 20 - 21)



**DOWNLOAD
DIGITAL**

**MEDICAL
COMPRESSION
PRODUCTS**



WHO ISEUROPACK?



While chasing our dreams, we create value and provide benefits. We make our work a part of our daily routine, we produce while we live, we live while we produce. We care about team awareness, sharing and cooperation, and we continue to learn every day with the excitement of the first day in order to walk confidently into the future. By combining the enormous power of knowledge with dreams, goals and experience, we adopt moderation as a principle and strive to be good for the soul of man. That's why our motto "Catch The Time" is the perfect sentence that expresses **EUROPACK** in two words, in the shortest and clearest way.

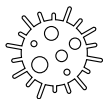
as **EUROPACK**, we know well that individuals with a healthy spirit will not suffer from any physical handicap. We design the values and products we produce by focusing primarily on serving human values and then on providing comfort by fulfilling the technical requirements.

We work with innovative principles that can add value to the society we live in, the environment and all living things with whom we share the environment, protect and protect their rights, and include us and the next generations.

We are **EUROPACK**, we set out to support you, add comfort to your life, grow and develop together, fully adhere to ethical principles and rules, and create value for the environment, all living things and humanity.

We look forward to establishing business partnerships with all our partners who share the same excitement as us on this journey, to be inspired by your ideas and to benefit from your experience.

WHY OUR? PRODUCTS?



ANTI-BACTERIAL

Due to the fact that they have direct contact with the skin and require long-term use, Europack Compression Stockings have been developed with special techniques and technologies for the prevention of bacteria and odor that developed due to micro-organisms and environmental factors that occur on the surface of the skin.



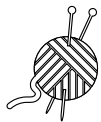
NON-PERSPIRATION

Europack compression socks are produced with knitting technique and yarn technology that minimizes sweating and breathable, and provides comfort to the patient in long-term use by removing moisture generated on the skin surface.



DOUBLE COATED YARN

The double-coated yarn technology used in Europack Compression Stockings provides extra durability in the products while at the same time supporting long-term use. And it minimizes technical problems that may arise during use.



SOFT KNITTING

The techniques used during the knitting allows the products to remain soft contact to the skin.



NON-SLIP

Silicone tape technology is used in Europack Compression Stocking in order to prevent slipping of the product.



REINFORCED HEEL

The knitting and weaving technology used in Europack Compression Products prevents early deformation of the product by providing extra support for the durability of the heel part.

WE TOUCH & CARE

WHAT
WE
DO

FROM RAW METARIAL TO PEOPLE

Our aim is to give the highest importance to provide comfort to people by using the best technology in production.

We try to help you as much as possible in the healing process by keeping your safety in the forefront. And we produce our garments by appropriate safety measures to ensure that you are treated with an ethical and moral manner during your healing-process. Making sure that our fabrics are of the highest quality, we provide the details with great devotion. After making sure that there is no problem, we deliver our products to you. While we aim to benefit people, we give back to what we take from the nature which we are a part of. We do not ignore our respect for nature while producing our products. Because we are EUROPACK we create value for the environment, all living things and humanity



YOUNG DYNAMIC INNOVATIVE STRONG ENERGETIC

TEAM

WITH MORAL VALUES



WE LOVE WHAT WE DO

EXPLORE EUROPACK'S WORLD

VISIT US





MEDICAL COMPRESSION STOCKINGS

It's compression pressure class: Class-I, Class-II, Class III.
Closed-toe and Open-toe models are available.
Tested according to Oeko-Tex Standard 100, skin-friendly.
The calcaneus part is extra-reinforced.
Long-lasting usage with its reinforced yarn and knitting technology.
Comfortable usage and accurate kompression effect with ideal anatomic design.
Below The Knee, Above The Knee, Pantyhose, and Maternity Stocking models are available.
Silicon tape/band technology prevents product to slide in upper part of the leg/thigh.

MEDICAL COMPRESSION STOCKINGS

Europack Compression Stockings are medical compression stockings which are circular knitted, especially advanced to prevent the post-operation and post-trauma edema and general swelling and for the compressive treatment of lower extremity

Compression Stockings are produced with proper materials and methodologies according to the "TS ENV 12719 Medical Thrombosis Prophylaxis Stocking" standard and with its production technology which supports the treatment with its user-friendly, comfortable, and right compression effect.

Compression Stockings, are the compressive care products for the lower extremity, accelerate the blood circulation with its constant and gradual compression effect. In the first stage, is used for circulation problems because of pregnancy, in edemas occur after pregnancy and lack of action.

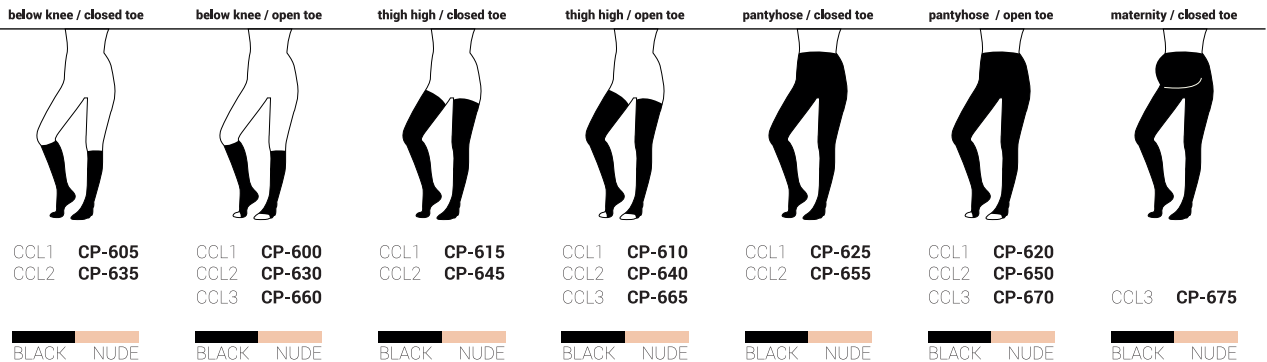
INDICATIONS

- > First stage after varicose treatment .
- > Post-reperfusion edema
- > Circulation problems and edema because of pregnancy
- > Edema linked to post-trauma, post-operation, limitation of movement or medicine
- > Superficial vein thrombosis
- > Thrombosis Prophylaxis in the mobile patients
- > Inflammatory dermatoses in legs
- > Dizziness and nausea linked to pregnancy

WHY OUR PRODUCTS?



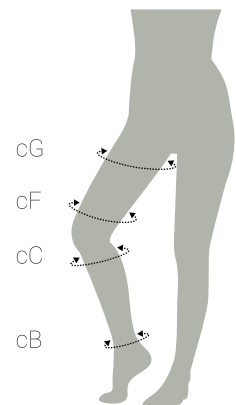
Pg. 6 - 7



III PRESSURE LEVELS	CCL1 18 - 21 mmHg	CCL2 23 - 32 mmHg	CCL3 34 - 46 mmHg
---------------------	-------------------	-------------------	-------------------

SIZE CHART

	1	2	3	4	5	6	7	UOM
cB	18 - 20	20 - 22	22 - 24	24 - 26	26 - 28	28 - 30	30 - 32	cm
cB1	22 - 25	23 - 28	26 - 32	28 - 35	30 - 37	32 - 38	34 - 39	cm
cC	28 - 34	30 - 37	33 - 40	35 - 43	37 - 46	39 - 49	41 - 51	cm
cD	27 - 32	28 - 35	32 - 38	34 - 41	36 - 44	38 - 47	40 - 50	cm
cE	32 - 38	33 - 41	37 - 44	39 - 47	41 - 50	43 - 52	45 - 54	cm
cF	36 - 46	37 - 51	42 - 57	45 - 60	49 - 65	52 - 68	55 - 70	cm
cG	45 - 58	46 - 61	49 - 64	52 - 68	46 - 71	60 - 74	64 - 79	cm



Information texts are not seen as advice from Doctors or Healthcare Professionals. For the accurate guidance and information, please consult your doctor and Healthcare Professionals

ANTI EMBOLISM STOCKINGS

It's compression class is Class-I.
Double-layer knitting technology is used to make product to slide easier on skin.
Thigh and ham part are knitted with flexible and especially breathable technology.
Designed with ideal anatomic form which ables product to fit the legs safely.
Free-latex and skin-friendly.
Below The Knee, Above The Knee and With a Waist Belt models are available.



ANTI EMBOLISM STOCKINGS

Europack Anti Embolism Stockings are medical compression stockings which are circular knitted, especially advanced to prevent the post-operation and post-trauma edema and general swelling and for the compressive care of lower extremity.

Anti-Embolism Stockings are produced with proper materials and methodologies according to the "TS ENV 12719 Medical Thrombosis Prophylaxis Stocking" standard and with its production technology which supports the treatment with its user-friendly, comfortable, and right compression effect.

Anti-Embolism Stockings, with constant and gradual compression effect, accelerate the blood circulation, reduces the coagulation. And reduces the risk of deep vein thrombosis in immobilized patients, and used for compressive treatment of lower extremity.

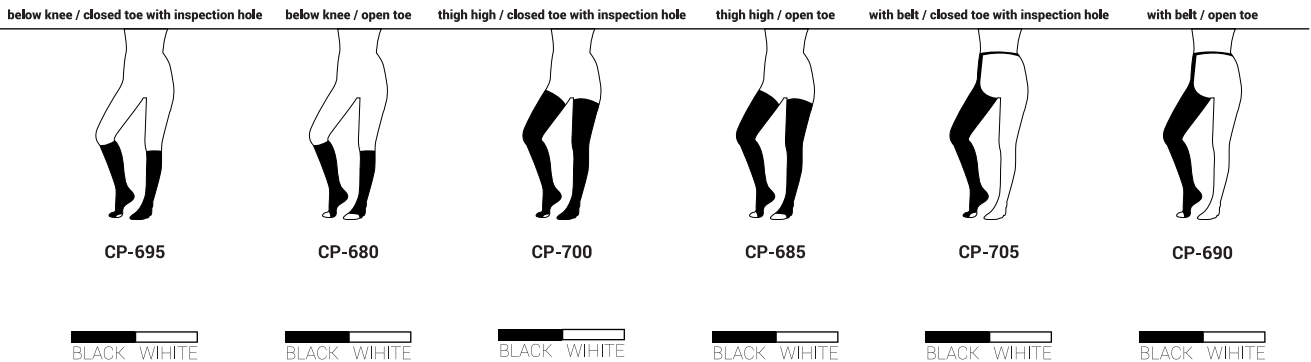
INDICATIONS

- > Accelerates the blood circulation with gradual compression effect.
- > Decreases the risk of thrombosis with its compression effect.
- > It's medical compression class is Class-I.
- > Used to prevent and treat the edema and general swelling, occur post-operation and post-trauma.

WHY OUR PRODUCTS?



Pg. 6 - 7

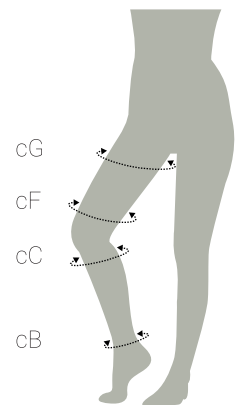


III PRESSURE LEVELS

CCL1 13 - 18 mmHg

SIZE CHART

	S	M	L	XL	XXL	UOM
cB	20 - 22	22 - 24	24 - 26	26 - 28	28 - 30	cm
cB1	23 - 28	26 - 32	28 - 35	30 - 37	32 - 38	cm
cC	30 - 37	33 - 40	35 - 43	37 - 46	39 - 49	cm
cD	28 - 35	32 - 38	34 - 41	36 - 44	38 - 47	cm
cE	33 - 41	37 - 44	39 - 47	41 - 50	43 - 52	cm
cF	37 - 51	42 - 57	45 - 60	49 - 65	52 - 68	cm
cG	46 - 61	49 - 64	52 - 68	46 - 71	60 - 74	cm



Information texts are not seen as advice from Doctors or Healthcare Professionals. For the accurate guidance and information, please consult your doctor and Healthcare Professionals



LYMPHEDEMA ARM- SLEEVES

Knitting techniques and options proper for anatomical shape.
Compression pressure CCL1 (Medium pressure)
Produced accordingly to skin-friendly Deko-Tex Standard 100
Black and beige color options.
Air-permeability and anti-bacterial weaving.
Functional area is knitted with soft yarn at the elbow for comfortable use.

LYPHEDEMA ARMSLEEVES

Europack Lymphedema compression garments are an elastic garment worn to reduce the symptoms of lymphedema such as pain and swelling. As many methodologies are used in the treatment of lymphedema, the most appropriate, economical and sustainable treatment is for the patient to regularly use lymphedema compression clothing.

When lymphedema compression garments are started to be used after treatment, it helps to control edema. Europack Lymphedema compression garment provides an effective use thanks to its unique structure, soft texture and perfect compression support.

INDICATIONS

- > Distinct and nondecremental lymphedema,
- > Postoperative and posttraumatic lymphedema treatment,
- > After mastectomy operations,
- > Vascular occlusion and related problems,
- > Treatment of cheloid after burn and operations,

WHY OUR PRODUCTS?



Pg. 6 - 7

CCL1 **CP-710**
CCL2 **CP-715**
CCL3 **CP-720**

BLACK NUDE



wrist to shoulder / with silicone band

CCL1 **CP-725**
CCL2 **CP-730**
CCL3 **CP-735**

BLACK NUDE



wrist to shoulder / with shoulder strap

CCL1 **CP-740**
CCL2 **CP-745**
CCL3 **CP-750**

BLACK NUDE



thumb to shoulder / with silicone band

CCL1 **CP-755**
CCL2 **CP-760**
CCL3 **CP-765**

BLACK NUDE

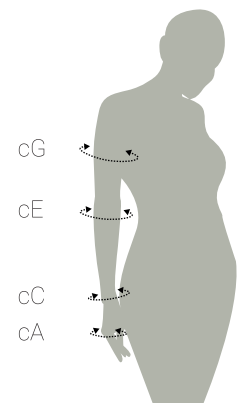


thumb to shoulder / with shoulder strap

III PRESSURE LEVELS	CCL1 18 - 21 mmHg	CCL2 23 - 32 mmHg	CCL3 34 - 46 mmHg
---------------------	-------------------	-------------------	-------------------

SIZE CHART

	1	2	3	4	5	6	7	UOM
cA	15 - 16	16 - 19	18 - 21	20 - 23	22 - 25	24 - 27	26 - 29	cm
cC	12 - 13	13 - 15	15 - 17	17 - 19	19 - 21	21 - 23	23 - 25	cm
cE	17 - 22	20 - 26	23 - 29	26 - 32	29 - 35	32 - 38	35 - 41	cm
cG	19 - 25	22 - 29	25 - 32	29 - 36	33 - 40	37 - 44	41 - 48	cm



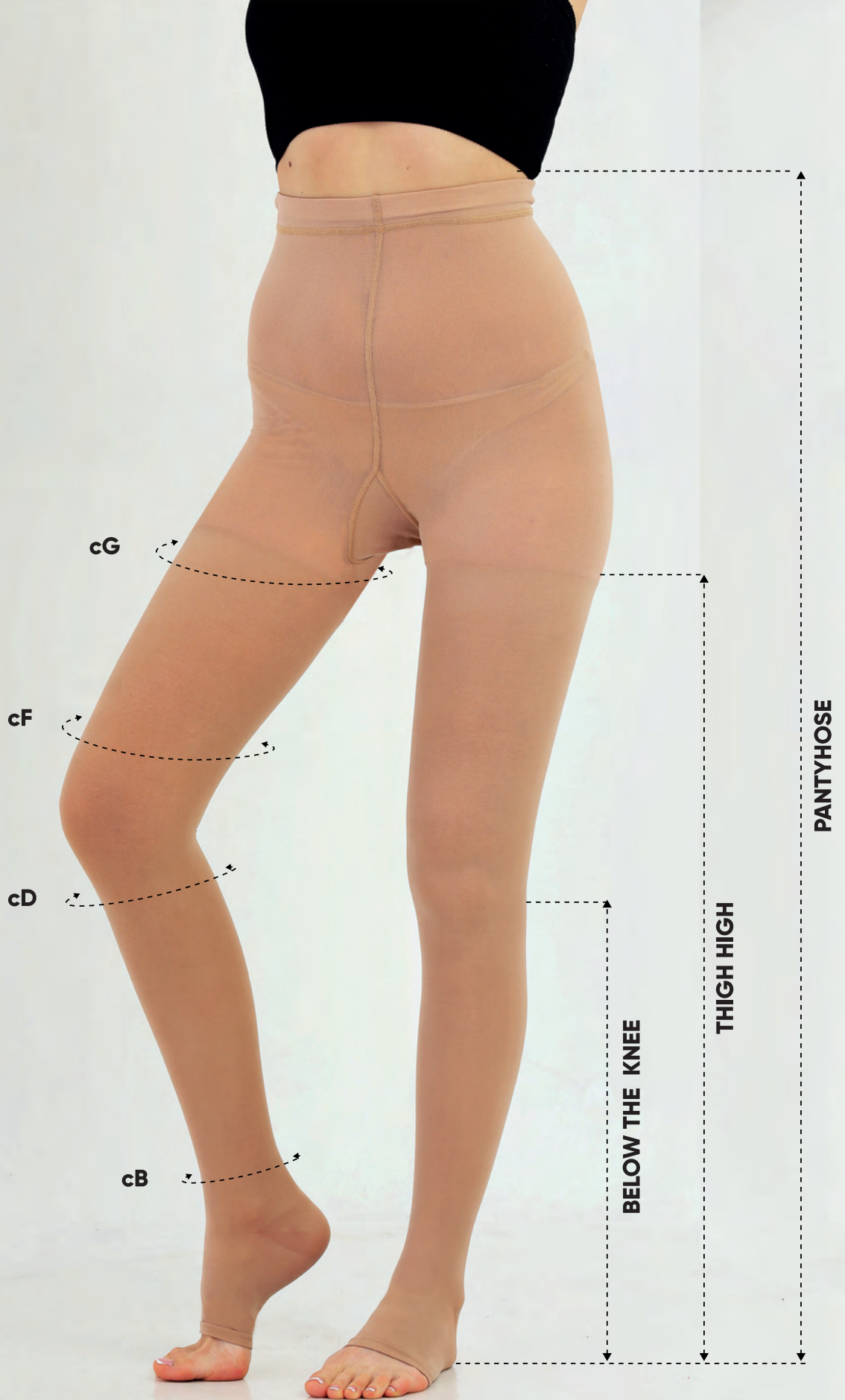
Information texts are not seen as advice from Doctors or Healthcare Professionals. For the accurate guidance and information, please consult your doctor and Healthcare Professionals

HOW TO MEASURE?

Accurate measurement is crucial for our products to be more effective. You can view the tips in below for accurate measurement.



- cG** Pull the measuring tape around the widest part of your hips. Generally, this will bring the tape measure right across your hip crease (where your leg creases when you lift your leg.) Make sure that the tape is running straight. This is your cG measurement.
- cF** Pull the measuring 2 cm above your knee, tape it around your leg. Make sure that the tape is running straight. This is your cF measurement.
- cD** Pull the measuring 2 cm below your knee, tape it around your leg. Make sure that the tape is running straight. This is your cD measurement.
- cB** Pull the measuring tape around the narrowest part of the ankle, which is normally just above the ankle bone. Make sure that the tape is running straight and level around your body. This is your cB measurement.





powered by **UK**


Contact us directly



EUROPACK

INTERNATIONAL HEALTH & SPORT PRODUCTS INC.

Factory

 Istanbul Anadolu Yakasi Organize Sanayi Bölgesi
Mermerciler Cd. No.334956 Tuzla / Istanbul - TÜRKİYE

Head Office

 841 High Road Rottenham N17 8EY London - UK

europack.com